



Customer Hardwire Connections

South-Tek Systems thanks you for purchasing one of our many hardwired generators! To hardwire the generator to a 110-250VAC power outlet, please read the following guide.

The figure below represents the electrical connections for a typical generator. Customer electrical schematics may vary from generator to generator, but terminal strip connections will remain the same.

Zone B3 in Figure 1 displays the location of the power terminals for generator hardwiring.

The terminal strip and customer connections are notated in Figure 2 on below, and Figure 3 on the bottom right.

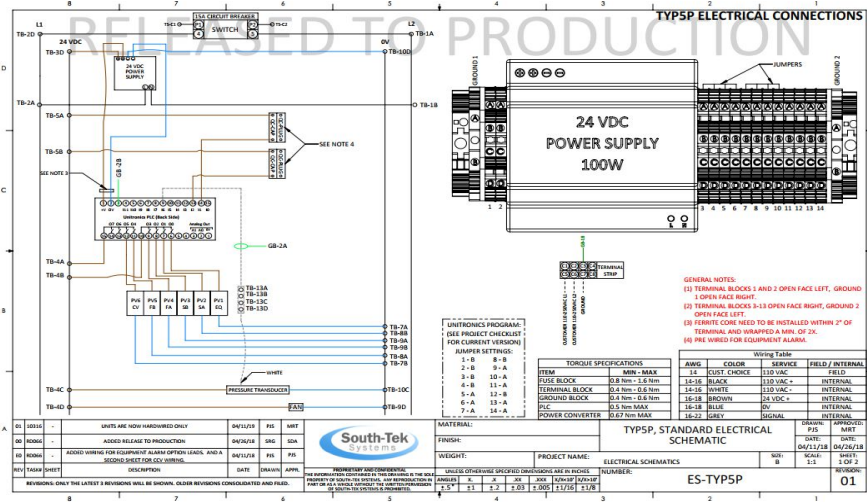


Figure 1. Typical Schematic

The customer should have connections similar to the black, white, and green wires seen in Figure 3. It should also be noted which customer connections correspond to the ungrounded hot (L1), the grounded neutral (L2), and the earth ground terminals, as the black and white wires could be switched or have completely different color codes.

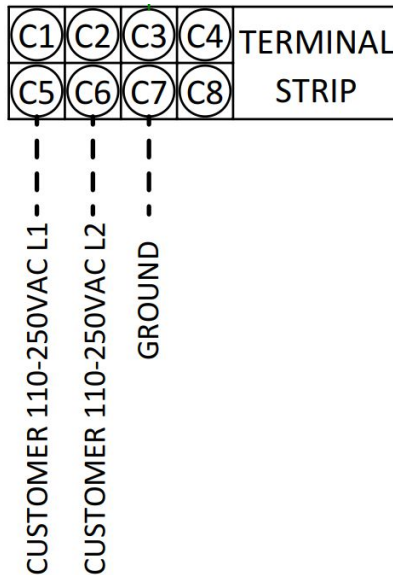


Figure 2. Terminal Strip

As seen in Figure 3, the black wire is the ungrounded hot (L1) and should be attached to terminal C5, the white/grey wire is used as the grounded neutral (L2) connection and should be attached to terminal C6. The earth ground is commonly green and should be attached to Terminal C7.

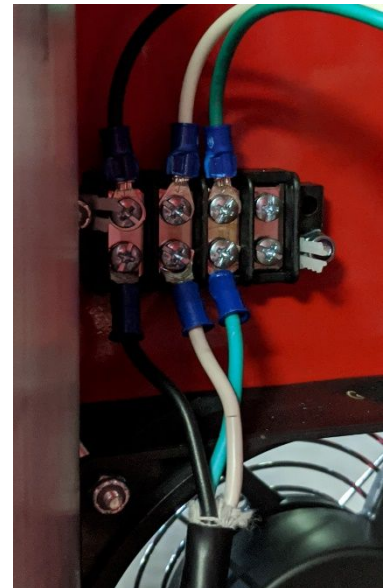


Figure 3. Customer Connections



South-Tek Systems
3700 US Hwy 421 N
Wilmington, NC 28401

Contact Us Toll Free:
(888) 526-6284